



Innovation
Pat. pending
Inventor

AIDIMA HALL, PLYWOOD, SIZE LARGE

20060592 ja 20060777
Martti Hotti

For Sale
Contact

The total innovation and business idea as a global production and marketing license.
Veikko Saksi (contact information below)

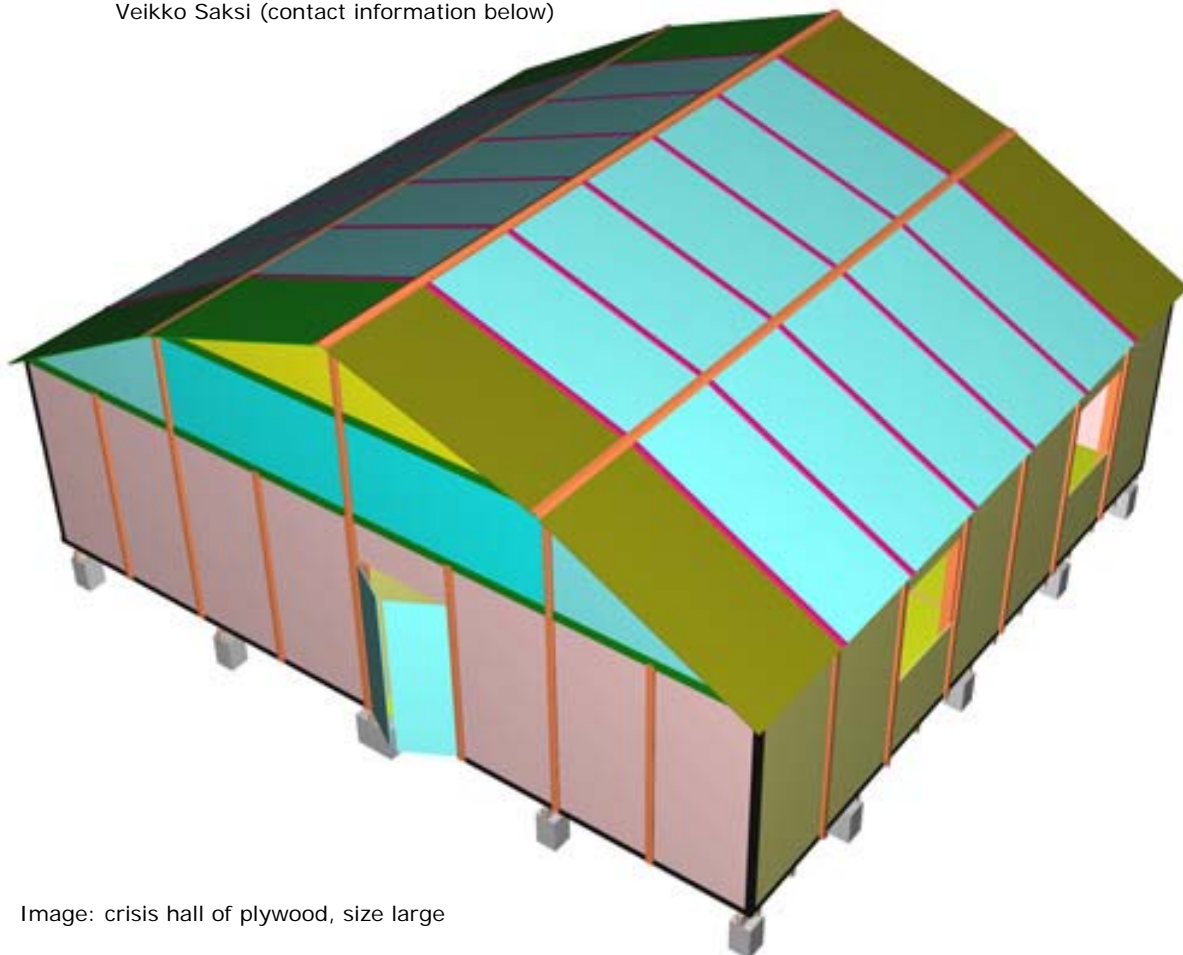
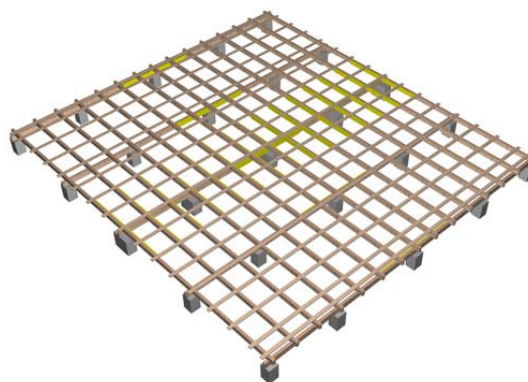
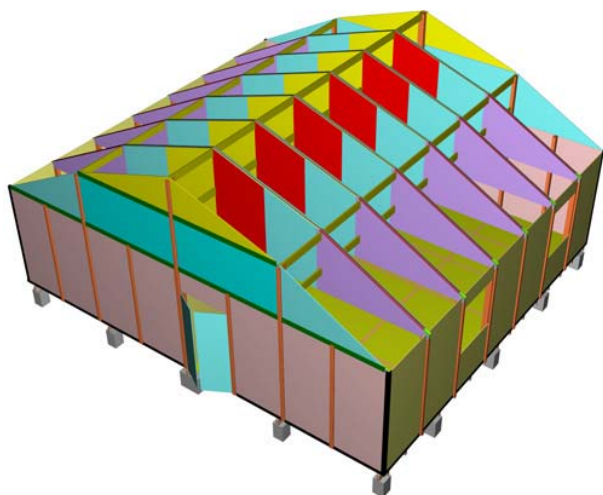


Image: crisis hall of plywood, size large

Use

Warehouse, production hall, sales hall, temporary care and mass accommodation hall. Light construction, quick to mount and dissemble, easy to transport, steady building. Durability 20 – 30 years.



Images: large plywood hall and base grating



Materials

Main material film coated 6, 20, 30 and 50 mm spruce plywood. Frame staked by steel, need of steel 3 200 kg.

Can be founded on concrete plate or on anchored poles. Fine adjustment in the plywood floor if needed. Assembled size: height of ridge 5 650 mm, height of wall 3 150 mm, area 10.6 x 11.6 m².

Plywood 8 mm 1.95 m³
Plywood 20 mm 10.45 m³
Plywood 30 mm 2.50 m³
Plywood 50 mm 0.70 m³ Total 15.6 m³

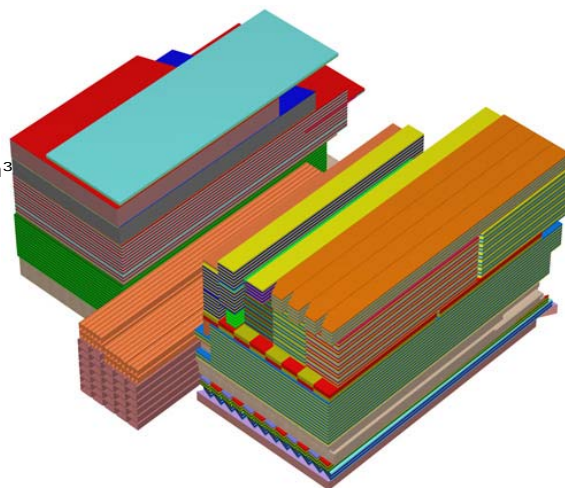
Heat treated spruce, planed: 100 x 30 mm, total 0.55 m³

Steel: 100 x 150 square pipe, wall 6 mm, total 94 m
Steel: 100 x 50 square pipe, wall 6 mm, total 94 m
Weight (both)/m 34 kg x 94 m = 3 200 kg

Triple blade hinge: 405 m, weight 2.3 kg/m

Raw material price estimates (VAT 0 %) :

Plywood 400 €/ m³
Heat treated spruce 380 €/ m³
Steel 0.80 €/kg
Triple blade hinge 6 €/m



Characteristics

Transportation packing: 150 x 190 x 206, 175 x 340 x 206 cm, steel 80 x 320 x 90 cm + equipment (plastic lists, fixing iron, bolts, other) in about 0.5 m³ box. Doors and windows according to separate plan. Transportation package: plastic foil. Weight plywood floor included about 12 500 kg.

Production line

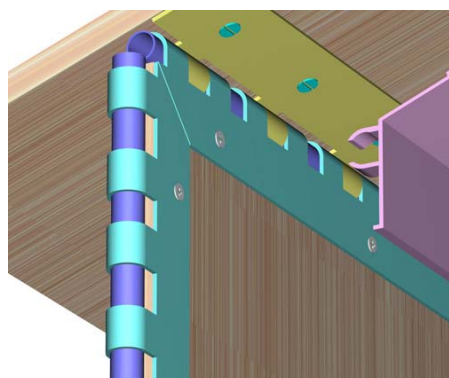
Theoretical basis for production line calculations: 50 halls/day.

1. Roof trusses: Machine phases: sawing and drilling. 11 lines, workers total 16.
2. Roof and wall sheets: precut sheets are drilled and hinges fixed by mechanical rivet machine. 11 lines, workers 24.
3. Producing combining purlins for roof trusses: a production line, 2 workers.
4. Production of roof basement: sawing and drilling of plywood material. 13 lines (incl. 2 production lines for heat treated wood), 21 workers total.
5. Packing: a 4 workers team packs 4 halls/day; 50 halls = 50 workers.

Total amount of production lines: 36 pc

Workers total: 161 + 10 auxiliary workers = 171 workers.

Assembling time for ready mounted concrete poles: 2 days by a 5 men team.
From subsupplier: plastic cover lists, bolts, fixing plates, concrete poles and frame steel.



Images: hinges